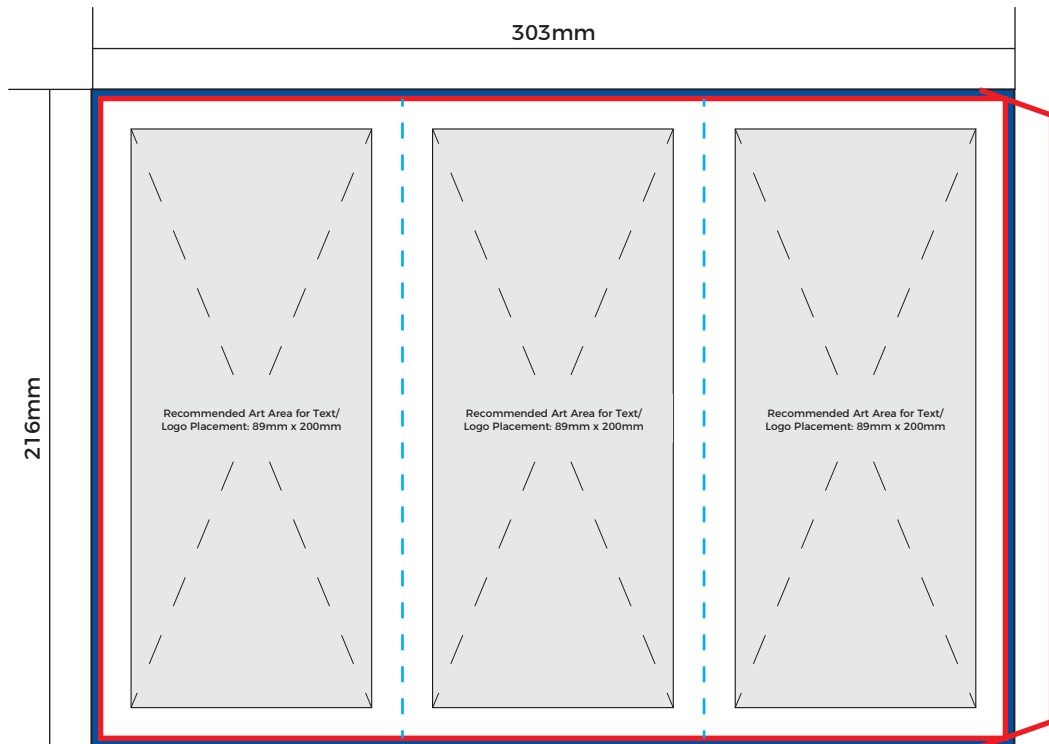




TABLE TALKER TEMPLATE

297MM X 210MM



Artboard Size should be set to 303mm x 216mm which includes 3mm of bleed. Background Images and/or Colours should extend to this dimension.



Overall Artwork Size (Including Bleed)

303mm x 216mm



Finish Size / Dieline

297mm x 210mm



Recommended Art Area for Text/Logos

89mm x 200mm



Panel Folds

Each Panel is 99mm x 210mm

PLEASE NOTE

- For best results avoid fine borders in the designing stages.
- Use font sizes greater than 5pts.
- Colours appear different than they do on the screen once printed.
- Please supply artwork in either vector format (preferred), or hi-res raster/bitmap format at 300PPI and at correct size.

