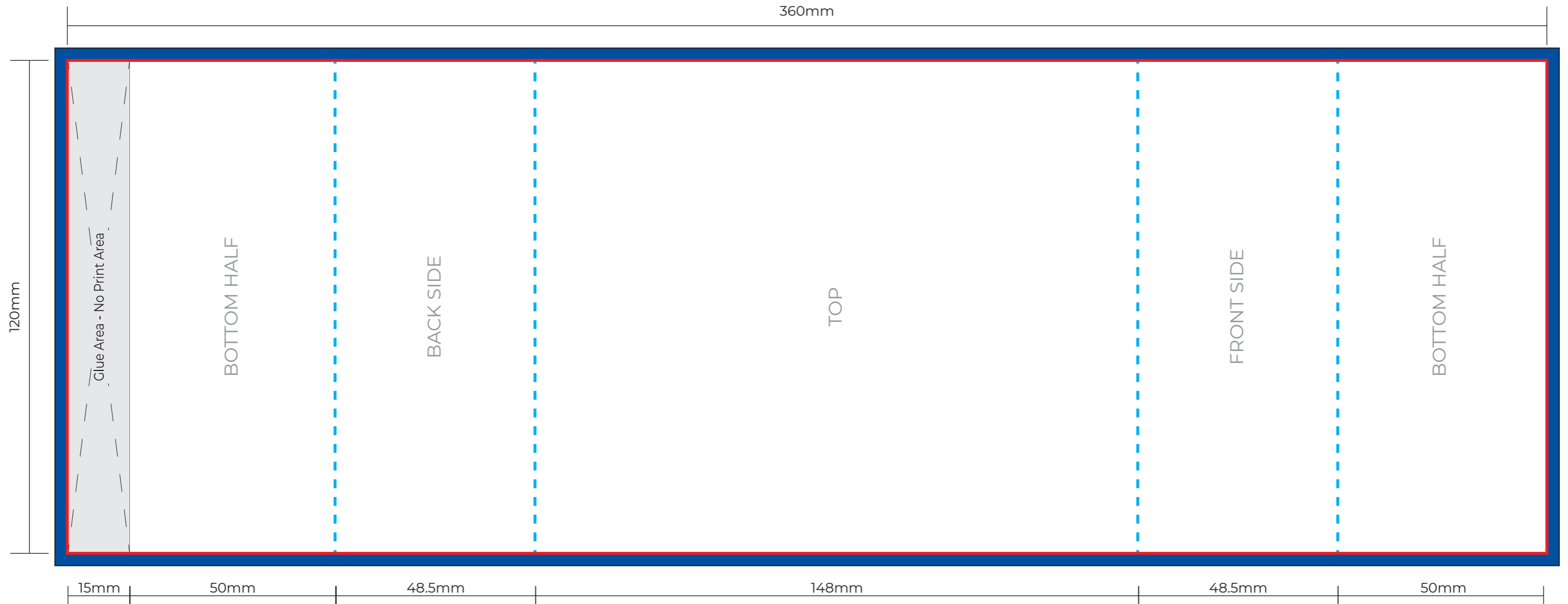


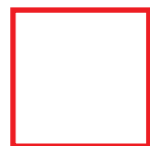


# TAKEAWAY SLEEVE WRAP

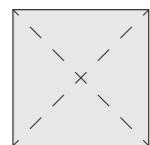
120MM X 360MM



**Overall Artwork Size (Including Bleed)**  
126mm x 366mm



**Finish Size / Dieline (Including Glue Flap)**  
120mm x 360mm



**Glue Flap Zone (No Print Area)**  
120mm x 15mm

## PLEASE NOTE

- For best results avoid fine borders in the designing stages.
- Use font sizes greater than 5pts.
- Colours appear different than they do on the screen once printed.
- Please supply artwork in either vector format (preferred), or hi-res raster/bitmap format at 300PPI and at correct size.
- Use CMYK. All RGB & Pantones will be converted to CMYK.

Artboard Size should be set to 120mm x 60mm, with 3mm bleed on all sides.  
Background Images and/or Colours should extend to this dimension - excluding the glue area.