

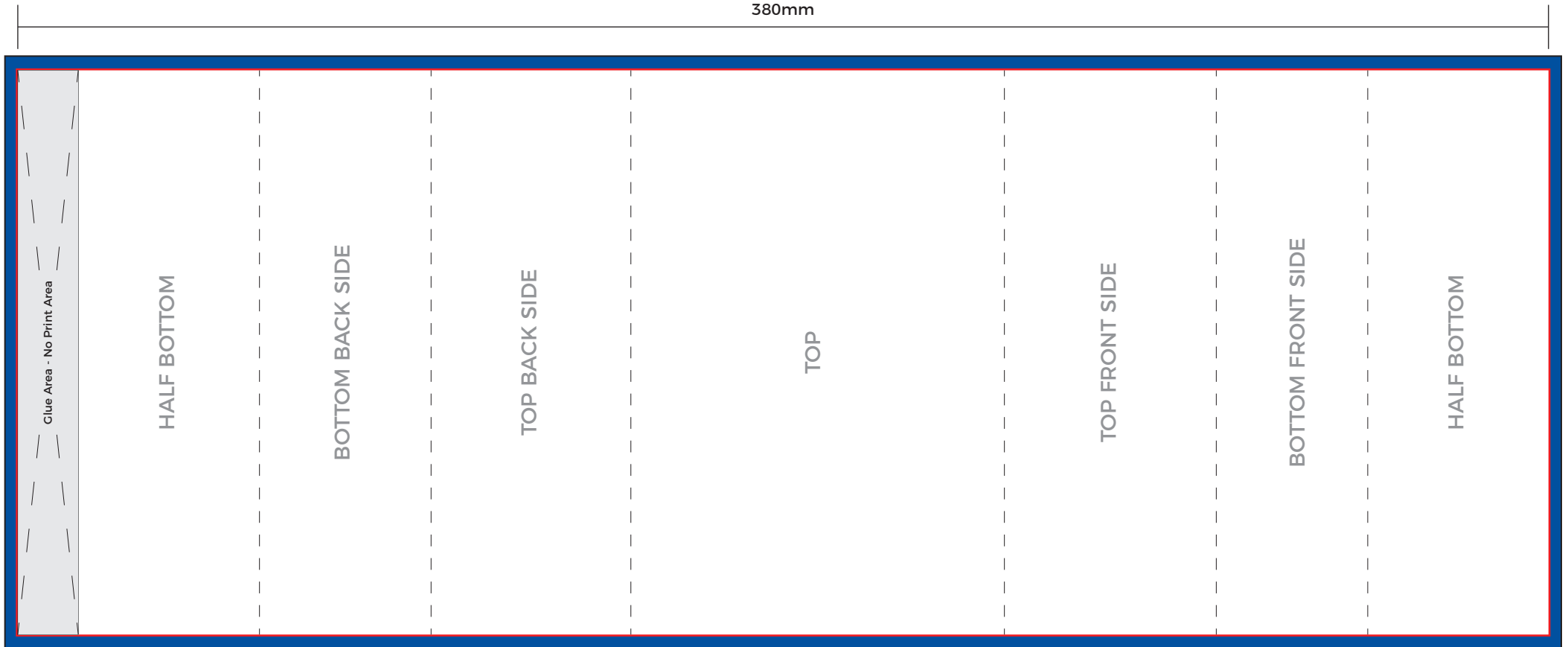


TAKEAWAY SLEEVE WRAP - WIDE SNACK

140MM X 380MM

380mm

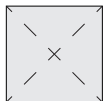
140mm



Overall Artwork Size (Including Bleed)
146mm x 386mm



Finish Size / Dieline (Including Glue Flap)
140mm x 380mm



Glue Flap Zone (No Print Area)
140mm x 15mm

PLEASE NOTE

- For best results avoid fine borders in the designing stages.
- Use font sizes greater than 5pts.
- Colours appear different than they do on the screen once printed.
- Please supply artwork in either vector format (preferred), or hi-res raster/bitmap format at 300PPI and at correct size.
- Use CMYK. All RGB & Pantones will be converted to CMYK.

Artboard Size should be set to 70mm x 380mm, with 3mm bleed on all sides.
Background Images and/or Colours should extend to this dimension - excluding the glue area.